



SCOPE

Journal of English Language Teaching

| p-ISSN 2541-0326 | e-ISSN 2541-0334 |
<https://journal.lppmunindra.ac.id/index.php/SCOPE/>



Research Article

Gender Equality and Intersectional Feminism in The Hidden Figures Movie Directed by Theodore Melfi

Galang Aji Perkasa¹, Sayyid Khairunas², Ary Iswanto Wibowo³, Unpris Yastanti^{4}*

^{1,2,3,4} Universitas Bina Sarana Informatika

KEYWORDS

Women's representation,
 Hidden Figures,
 Gender equality,
 Intersectional feminism.

A B S T R A C T

This research delves into a crucial approach for achieving true gender equality with a focus on women's representation. It highlights how media stereotypes reinforce traditional gender norms, fueling discussions on gender inequality, discrimination, and the reduction of women to symbolic entities rather than individuals. Specifically analyzing the film "Hidden Figures," the study explores its pivotal role in addressing racial and gender disparities, unraveling the intricate challenges faced by highly skilled African-American women in STEM fields. Employing a descriptive qualitative approach, the research aims to comprehensively understand the struggles depicted in "Hidden Figures" and how female characters utilize feminism and gender equality as forms of social resistance. The film critically examines pervasive gender discrimination within STEM fields, revealing the intertwined biases hindering the advancement of women of color. The narrative emphasizes the triumph over limited educational opportunities, portraying protagonists' unwavering courage in challenging societal norms. "Hidden Figures" underscores the significance of male allies, the transformative impact of legal and social changes, and the importance of workplace representation. In conclusion, the film aligns with intersectional feminism principles, advocating for unity against complex forms of oppression and striving for a more equitable societal landscape.

CORRESPONDING AUTHOR(S):

E-mail: unpris.uys@bsi.ac.id

INTRODUCTION

In the vast tapestry of human creativity, literature stands as an enduring testament to the power of words to shape worlds, provoke thoughts, and kindle emotions. From ancient epics etched onto clay tablets to contemporary novels transmitted through digital screens, literature has been an indispensable medium through which humanity expresses its dreams, fears, and aspirations (Royle, 2011; Royle & Andrew, 2015; Johnson & Christie, 2009). With

each page turned, a portal to a new dimension opens, inviting readers to traverse landscapes both familiar and fantastical, to connect with characters that mirror our own selves or challenge our perceptions, and to engage with ideas that spark contemplation and discourse. The realm of literature, a sanctuary of boundless imagination, is a journey that has captivated minds across cultures and generations. The roots of literature reach deep into the annals of human history. In the earliest civilizations, oral traditions gave birth to epics that were recited and sung, relaying tales of gods and heroes, battles and tragedies. The

Epic of Gilgamesh from ancient Mesopotamia and the Iliad and Odyssey of ancient Greece are prime examples of how literature emerged as a means of preserving cultural heritage and transmitting shared values from one generation to the next. These early narratives, often interwoven with mythology, laid the foundation for storytelling techniques that would evolve over time.

The relationship between literature and gender equality also unveils the complex layers of intersectionality, acknowledging that gender oppression cannot be isolated from other forms of discrimination. Literature has engaged with issues of race, class, sexuality, and disability, revealing the interconnected web of oppressions that shape individuals' lives. Novels like "The Color Purple" by Alice Walker and "Middlesex" by Jeffrey Eugenides offer poignant insights into the overlapping struggles of marginalized individuals, emphasizing the importance of addressing gender equality within a broader context (Heathcote & Otto, 2014). While literature has undeniably been a site of resistance against gender inequality, it has also been accused of perpetuating harmful stereotypes. The portrayal of women as passive objects of desire or men as emotionless providers has at times reinforced damaging norms. However, this duality also highlights literature's potential for transformation. By recognizing the power of representation, authors and readers alike can actively engage in the creation of narratives that subvert these stereotypes and contribute to a more egalitarian cultural landscape.

Throughout the annals of history, the role and status of women in society have undergone profound transformations, reflective of the broader shifts in cultural, social, and economic dynamics. The journey of women from relegated subordinates to active contributors in various spheres of life has been marked by struggles, victories, and paradigm shifts. In recent decades, the global discourse has fervently focused on achieving gender equality, altering traditional social relations, and fostering an inclusive society where women's roles are not confined but celebrated. This intricate tapestry of women's position in society within the context of gender equality is a multifaceted narrative that demands exploration. For much of recorded history, women were subjugated to limited roles and relegated to the private sphere, devoid of opportunities for education, political participation, and economic agency. Their existence was defined by cultural norms, which often confined them to the roles of wives, mothers, and caregivers. This historical backdrop was entrenched with gender-based discrimination and reinforced by socio-economic structures that denied women access to resources, representation, and autonomy. The late 19th and 20th centuries witnessed the emergence of feminism as a potent force challenging the status quo. Waves of feminism sought to deconstruct patriarchal

constructs, advocate for women's suffrage, and call attention to systemic injustices (Giorgi, 2021; Griffin, 2012). These movements paved the way for women's education, entry into the workforce, and political engagement. As a result, societies gradually began to recognize the contributions and capabilities of women beyond traditional roles.

In this modern era, the use of mass media such as film has an advantage in spreading images of social reality that often occur in society (Thadi, 2014). The study of how films affect society and how they relate to society is a one-way street. In other words, films have the ability to influence society through the messages contained in them without any reverse influence. However, there are critics of the view that films are created as a representation of society itself. Movies are made as a result of the reality of society and then projected onto the screen. The function of film is to reflect reality by transferring it to the screen without changing the substance of that reality. On the other hand, film also functions as an interpretation of reality by bringing back that reality through codes, justifications, and cultural views.

According to (Thadi, 2014), Referring to the common domestic role in society, women's representation in the media is often associated with depictions of household duties which are the norm. The media also often associates women's physical attractiveness with efforts to gain high ratings and exert influence within the capitalist system. This phenomenon, unwittingly, has made women mere symbols in art and commercial works. They appear in advertisements, movies, and drama series as visual objects. However, this kind of image gives rise to the use of media that focuses on women's body parts, ignoring their shape and social role in society. Gender bias arises due to gender differences, resulting in an unfair distribution of roles. Men tend to engage in skill-oriented activities outside the home, while women are more focused on domestic responsibilities. Men achieved a higher social status by mastering public areas such as fighting, agriculture, and the production that yielded material wealth. This inequality shapes the general view of gender roles and maintains the view that inequality is natural. As a result, gender inequality leads to discrimination against women, who are placed in a position of subordination to men (Shannon, et al, 2019). The media often reflects this phenomenon, by raising social issues that are common in society. Works of art such as films, plays and television shows often reflect this social reality.

This research raises the issue of gender equality which gives rise to the existence of an intersectional feminism-type feminist movement as the resistance of women in social circles against the negative paradigm towards their people which is represented in the movie *Hidden Figures* because

at this time the term gender construction is still a frequent problem happens to society, especially women's injustice in the role they live like in this movie which focuses on the equality of women against men especially in legal, political, social, workplace and educational fields. As stated by (Wood & Eagly, 2012) Gender discrimination should be eliminated because the rights of every woman are becomes limited and this becomes the question of whether people can appreciate and respect the rights of every human being without regardless of their gender.

The movie "Hidden Figures," directed by Theodore Melfi, presents a narrative that highlights the struggles and achievements of women in the historically male-dominated field of science and technology. The movie portrays the lives of African-American women mathematicians working at NASA during the 1960s, shedding light on both racial and gender inequalities prevalent in the society of that era. This study aims to critically analyze the representation of gender equality and the principles of intersectional feminism as forms of women's resistance within the context of the "Hidden Figures" movie (Shetterly, 2016)..

It is important to identify the problems to be examined in this paper. so that the research objectives and scope of analysis can be clearly defined. The researchers will analyze problems that are the focus of this research. The problems are: (1). How is the concept of gender equality portrayed in the movie? (2.) How is intersectional feminism depicted as a form of women's resistance in the film Hidden Figures directed by Theodore Melfi?

METHOD

In the study of "Gender Equality and Intersectional Feminism as Women's Resistance in The Hidden Figures Movie Directed By Theodore Melfi", researchers used a descriptive qualitative research method approach. This method was chosen because the aim is to describe and analyze in depth the role of gender equality and intersectional feminism in women's resistance, as depicted in the film "Hidden Figures" by Theodore Melfi. The descriptive qualitative approach allows the researcher to detail the experiences of the female characters in the film, analyze the social and cultural backgrounds that shape their views, and explore how elements such as race, class, and other identities interact in the context of their resistance.

According to (Turale, 2020) Qualitative description is a research design that involves providing a straightforward and firsthand description of the facts of a phenomenon, event, or experience. It is a practical and pragmatic approach that focuses on uncovering the "who, what, or where" of the subject under investigation. While it is the least theoretical of all qualitative approaches, it can still

incorporate a conceptual framework or interpretive theory to guide the study.

In this method, research data will be obtained through an in-depth analysis of the narration, dialogue, actions, and interactions of the characters in the film. The writers will carry out steps such as dialogue transcription, symbolic recording, and identification of the key themes that emerge. This qualitative data will be analyzed contextually using a descriptive approach to describe the dynamics of women in the film and explain how gender equality and intersectionalfeminism are reflected in their resistance to existing norms.

RESULTS AND DISCUSSION

Concept of Gender Equality Potrayed in the Movie

In *Hidden Figures*, the protagonists are initially assigned to menial tasks and face barriers to advancement simply because of their gender and race. This reflects a broader historical trend where women's capabilities were underestimated and undervalued.

1. **Gender Discrimination in STEM Fields:** The movie sheds light on the pervasive gender discrimination that women, especially women of color, faced in STEM (Science, Technology, Engineering, and Mathematics) fields. Despite their exceptional talents and skills, the female protagonists are initially relegated to menial roles because of their gender. This illustrates the deeply entrenched gender bias that existed in the workplace during that era. This reflects a broader historical trend where women's capabilities were underestimated and undervalued.
2. **Intersectionality:** "Hidden Figures" explores the concept of intersectionality, where gender and race intersect to create unique challenges and disadvantages. The characters in the film faced discrimination not only because they were women but also because they were African American. This intersectional perspective is crucial in understanding the multiple forms of discrimination these women had to overcome.
3. **Educational Barriers:** The movie highlights the importance of education and how access to quality education can be a pathway to breaking down gender and racial barriers. Katherine Johnson (2009), in particular, is shown as a brilliant mathematician who had to overcome limited educational opportunities for African Americans to pursue her passion for mathematics.
3. **Courage and Perseverance:** The protagonists in "Hidden Figures" demonstrate tremendous courage and perseverance in the face of adversity. They refuse to accept the status quo and work tirelessly to prove their worth. Their determination serves as an inspiring

example of how individuals can effect change, even when faced with systemic discrimination.

4. **Allyship and Support:** The film also highlights the importance of allies in the fight for gender equality. Characters like Al Harrison, the director of the Space Task Group at NASA, played by Kevin Costner, symbolize the significance of male allies who recognized the talent and contributions of these women and supported their efforts to break down gender barriers.
5. **Legal and Social Changes:** "Hidden Figures" is set against the backdrop of the Civil Rights Movement and the push for equal rights in the 1960s. The movie shows how legal and social changes, such as desegregation and equal employment opportunities, began to challenge institutionalized discrimination and open doors for marginalized groups.
6. **Representation Matters:** The film underscores the importance of representation in the workplace. When Dorothy Vaughan becomes the first African-American supervisor at NASA, it signifies not only her personal achievement but also the broader significance of having diverse role models in positions of authority.

Intersectional Feminism as Women's Social Resistance Portrayed by the Main Characters

Intersectional feminism is a theoretical framework and approach within feminist theory that acknowledges and examines the ways in which multiple social identities and forms of oppression intersect and interact. It was first introduced by Kimberlé Crenshaw (1989), a critical race theorist and legal scholar, in the late 1980s. Intersectional feminism seeks to highlight and address the complex and interconnected nature of discrimination and inequality faced by individuals who hold multiple marginalized identities, such as race, gender, class, sexuality, disability, and more (Wood & Eagly, 2012).. This concept recognizes that individuals experience various forms of privilege and oppression simultaneously, and their experiences cannot be fully understood by looking at each identity in isolation. Intersectional feminism is portrayed in the film through several key themes:

1. **Gender and Race:** The film explores the intersection of race and gender by focusing on the experiences of African-American women in a predominantly white and male workspace. The characters face both gender-based discrimination and racial discrimination, illustrating the unique challenges they must overcome.

In the movie "Hidden Figures," directed by Theodore Melfi and based on the book by Margot Lee Shetterly, the characters face both gender-based discrimination

and racial discrimination throughout the film. One notable scene that illustrates this is when Katherine Johnson, played by Taraji P. Henson, is forced to use a segregated bathroom.

In this scene, Katherine, who is a brilliant mathematician and physicist working at NASA during the early 1960s, is assigned to work in the Space Task Group, which is predominantly composed of white male engineers. When she needs to use the bathroom, she is confronted with the harsh reality of segregation. She has to run a considerable distance from her workplace to reach the nearest "coloured" bathroom, often facing the pressure of time-sensitive calculations. This scene powerfully portrays the intersectionality of gender and racial discrimination, as Katherine's intelligence and expertise are not enough to shield her from the systemic discrimination and segregation of the era.

This bathroom scene is just one of many instances in the movie where the characters confront the dual challenges of sexism and racism as they strive to make significant contributions to the space program while enduring discrimination based on their gender and race. "Hidden Figures" sheds light on the struggles these remarkable women faced in their efforts to break down these barriers and make a lasting impact on the field of space exploration.



Figure 1 Katherine looking for segregation bathroom for black women

Katherine: There's no bathroom for me here. There is no bathroom. There are no colored bathrooms in this building. Or any building outside the West Campus, which is half a mile away. Did you know that? I have to walk to Timbuktu just to relieve myself. And I can't use one of the handy bikes. Picture that, Mr. Harrison. My uniform. Skirt below my knees, my heels, and a simple string of pearls. Well, I don't own pearls. Lord knows you don't pay coloreds enough to afford pearls! And I work like a dog, day and night, living off of coffee from a pot none of you wanna touch. So, excuse me if I have to go to the restroom a few times a day.

2. **Solidarity and Sisterhood:** Despite the challenges they face, the three main characters support and uplift each other. Their solidarity and friendship underscore the importance of building coalitions across differences to fight for gender and racial equality.

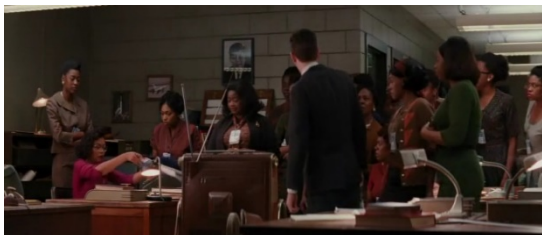
In the "Hidden Figures" movie, there's a scene where Katherine Johnson (played by Taraji P. Henson) is faced with the challenging task of calculating the re-entry trajectory for John Glenn's Friendship 7 spaceflight. She is given a set of complex calculations that need to be completed within a very tight deadline. Facing discrimination and scepticism from some of her colleagues, Katherine works tirelessly to complete the calculations.

During this scene, Mary Jackson (played by Janelle Monáe), Dorothy Vaughan (played by Octavia Spencer), and the other women colleagues come to Katherine's aid. They recognize the importance of the task and the urgency of the situation. They provide Katherine with the information and resources she needs to complete the calculations successfully.

As African-American women, they understand how their fights against racial and gender injustice are linked. This united endeavour to overcome difficulties adheres to intersectional feminism, which emphasizes the necessity to confront these women's multiple oppressions. Moreover, it also depicts resistance to workplace systemic inequality. The characters question the idea that women, especially women of colour, should play specific roles by sharing resources and skills. Intersectional feminism seeks to recognize and dismantle privilege and oppression.

These characters' solidarity shows a shared knowledge of their contributions and the urgency of changing the status quo. Intersectional feminism drives collective action, uniting people confronting multiple forms of discrimination. This moment in "Hidden Figures" captures the film's theme of collaboration and solidarity in times of trouble. It resonates with intersectional feminism by highlighting the complicated role of race and gender in these women's experiences and emphasizing their collective strength in the fight for equality.

In other words, this scene beautifully demonstrates the solidarity and sisterhood among these women. They come together to overcome obstacles and support each



other in a challenging and male-dominated work environment. It is a powerful moment in the film that underscores the theme of unity and the strength that can be found in working together.

Figure.2 Katherine gets support from Dorothy, Mary, and the other women colleagues.

3. **Breaking Barriers:** The film showcases how the characters' determination and brilliance ultimately lead to breaking gender and racial barriers at NASA. Katherine Johnson's role in calculating orbital trajectories and Mary Jackson's efforts to become an engineer exemplify how they challenge societal expectations and pave the way for future generations.

One of the most iconic scenes in the movie is when Katherine Johnson (played by Taraji P. Henson) is tasked with verifying the calculations for John Glenn's orbital mission. The entire NASA team is under immense pressure to ensure Glenn's safe return to Earth, and Johnson's role is pivotal in making that happen.

In this scene, Katherine is faced with a room full of predominantly white, male engineers and mathematicians who are sceptical of her abilities due to her gender and race. She is given a stack of complex calculations that need to be double-checked in a very limited time frame. Instead of backing down or succumbing to the pressure, Katherine steps up to the challenge. She meticulously reviews the calculations, making sure every number and equation is accurate. Her determination and brilliance shine through as she not only completes the task but does so with unparalleled accuracy and speed. As she presents her findings, the room falls silent as everyone realizes the magnitude of her contributions. Her remarkable perseverance and meticulousness serve as a testament to her resilience in the face of societal prejudices that aimed to confine her due to her gender and race. It showcases the remarkable capacity of the individual to thrive in high-stress situations, thereby emphasizing their exceptional aptitude. Moreover, it offers a more comprehensive perspective by drawing attention to the unexplored capabilities of women, particularly those from marginalized racial backgrounds, within the STEM disciplines.

The presence of Katherine as a person also serves as a catalyst for challenging deeply ingrained biases within a predominantly white male engineering community. Her exceptional abilities and expertise in the field of mathematics are met with scepticism and resistance, highlighting the prevailing prejudices that exist within this particular environment. The portrayal in question serves as a symbolic representation of the gender and

racial barriers that were prevalent within NASA during the 1960s.

John Glenn himself requests that Katherine personally verify the calculations, placing his trust in her expertise. This moment is a turning point in the film, symbolizing the breaking down of gender and racial barriers at NASA. It illustrates how Katherine's determination, intelligence, and unwavering commitment to excellence ultimately earned her the respect and recognition she deserved, regardless of her race or gender.

On top of that, John Glenn's trust to Katherine carries significant symbolic weight. This statement highlights the significance of a notable departure from deeply entrenched societal norms that perpetuate systemic discrimination. It underscores a transformative shift towards a more inclusive and equitable society, where individuals are evaluated based on their abilities and achievements rather than their gender or race. The turning point experienced by Katherine has significant personal implications and also acts as a catalyst for dismantling institutional barriers. This pivotal moment paves the way for future generations of women and minorities in the field of STEM.



Figure.3 Katherine shows her calculation in front of the board members

The other of the pivotal scenes in the movie that showcases a great women determination is the character of Mary Jackson (played by Janelle Monáe). One of the pivotal scenes in the movie that showcases Mary's determination to become an engineer is when she decides to take legal action to challenge the segregation policies that prevent her from attending engineering classes at an all-white school.

In the scene, Mary Jackson is shown meeting with her supervisor, played by Kevin Costner, and discussing her ambition to become an engineer. She is informed that in order to achieve her goal, she needs to take engineering courses, which are only available at a segregated school. The school is unwilling to admit her because of her race.

Undeterred, Mary decides to take matters into her own hands. She researches the relevant laws and approaches a

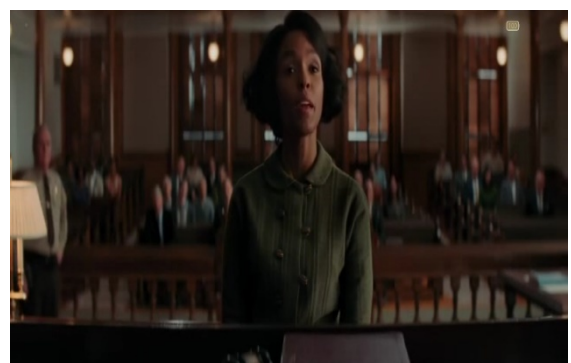
lawyer, who agrees to help her fight the segregation policy in court. This leads to a court case where Mary argues for her right to attend the classes necessary for her to become an engineer. Mary's decision to challenge segregation policies, which hindered her goal of becoming an engineer, represents the larger fight against discrimination based on race and gender.

This storyline is a significant part of the movie as it highlights the racial and gender discrimination that Mary Jackson and other African-American women faced during that time. This narrative supports intersectional feminism, which highlights how different forms of oppression are interconnected and emphasizes the importance of addressing multiple layers of discrimination at the same time (Gillis & Waters, 2011; Lloro-Bidart & Finewood, 2018). It also emphasizes the determination, courage, and resilience of Mary and her colleagues in pursuing their dreams and breaking down barriers in the field of science and engineering. Ultimately, Mary's efforts in the movie are successful, and she becomes NASA's first female African-American engineer.

Furthermore, Mary's legal action demonstrates her proactive stance against systemic injustices. Through conducting legal research and obtaining legal support, she emerges as a proactive advocate in challenging discriminatory policies. This statement highlights how intersectional feminism empowers individuals to actively challenge and navigate oppressive structures.

Mary's achievement as NASA's first female African-American engineer symbolizes a significant milestone in the ongoing fight for gender equality. The narrative highlights the significance of addressing institutionalized discrimination in order to promote equal opportunities for underrepresented individuals in STEM fields.

Figure 4 Mary in court to fight for her rights to pursue a degree



in Engineering

Intersectional feminism functions as a form of social resistance by addressing and challenging the intersecting systems of oppression that impact individuals based on their multiple social identities, such as race, gender, class, sexuality, disability, and more. It recognizes that these forms of oppression are interconnected and cannot be

effectively addressed in isolation. Here's how intersectional feminism operates as a form of social resistance:

1. **Recognizing Intersecting Identities:** Intersectional feminism acknowledges that individuals hold multiple identities and that these identities interact in complex ways to shape their experiences. For example, a Black woman may face different forms of discrimination and oppression compared to a white woman or a Black man. Understanding these intersections is crucial for social resistance.
2. **Highlighting Marginalization:** Intersectional feminism sheds light on the experiences of marginalized groups that may be overlooked or marginalized even within broader feminist or social justice movements. It emphasizes the importance of amplifying the voices of those who are most affected by multiple forms of oppression.
3. **Challenging Structural Inequities:** Intersectional feminism challenges the structural inequities present in society that perpetuate various forms of discrimination. This includes advocating for policy changes, legal reforms, and institutional shifts to address systemic bias and discrimination.
4. **Broadening the Movement:** Intersectional feminism seeks to create an inclusive and diverse movement that addresses the concerns and needs of people from various backgrounds. By building coalitions across different social justice movements, it strengthens the overall resistance against oppressive systems.
5. **Intersectional Analysis:** An intersectional approach encourages individuals and activists to analyse social issues from multiple angles, taking into account how various forms of oppression intersect. This deepens the understanding of the complexity of social problems and informs more effective strategies for resistance.
6. **Empowering Marginalized Communities:** Intersectional feminism empowers marginalized communities by providing them with a framework to understand and articulate their experiences. It promotes self-advocacy and solidarity among those who share intersecting identities.
7. **Promoting Inclusivity:** Intersectional feminism advocates for inclusivity within feminist and social justice spaces, ensuring that the concerns of individuals with intersecting identities are not marginalized or ignored. It encourages allyship and coalition-building among diverse groups.
8. **Challenging Stereotypes and Myths:** Intersectional feminism challenges harmful stereotypes and myths

that perpetuate discrimination and oppression. It exposes how stereotypes about race, gender, and other identities contribute to societal bias.

9. **Raising Awareness:** Through activism, education, and advocacy, intersectional feminism raises awareness about the pervasive nature of systemic oppression. It encourages critical thinking and dialogue about how different forms of discrimination intersect.
10. **Promoting Individual and Collective Resistance:** Intersectional feminism encourages both individual and collective forms of resistance, ranging from personal acts of defiance to organized social and political movements aimed at dismantling oppressive systems.

In essence, intersectional feminism functions as a powerful tool for social resistance by recognizing and addressing the complexity of intersecting forms of oppression and advocating for a more equitable and just society for all. It helps create a more inclusive and effective movement that challenges systemic discrimination and works toward positive social change.

CONCLUSION

To the present time, based on the perspective of formal grammar, the mastery of verbs has been one of linguistic challenges faced by Indonesian students majoring in English education. This comparative study has revealed the different tendency of English verb errors of second-year and third-year university students majoring in English education based on not only formal grammar but also functional grammar. Whereas the first group tended to make errors in missing *be* both in relational and material clauses, the latter had the tendency to make errors in subject-verb agreement in material clauses. Based on the findings of the present study, it can be concluded that grammatical competence of making meaning with *be* is still challenging. Hence the teaching of nominal verbs for Indonesian students should be emphasized especially for the lower-level students. Further, the pedagogical intervention for higher-level students should focus on the use of subject-verb agreement especially in simple present tense sentences.

Despite its findings, the current analysis has only focused on the inaccuracy of verbs between second-year and third-year university students majoring in English education, based on the perspectives of formal and functional grammar. To confirm the findings of the present study, further studies can make use of more students as the participants. In addition, to extend the scope of this study, further analyses can relate students' verb errors to their first languages. As it is known, to many Indonesian people, Indonesian is not their first language, but rather their

second language. The film "Hidden Figures," directed by Theodore Melfi, serves as a powerful lens through which to explore the themes of gender equality and intersectional feminism. In this paper, the writer has delved into the intricacies of gender equality and intersectional feminism as depicted in the film, analyzing the characters, historical context, and broader implications for women's resistance. Throughout the analysis, the discrimination and prejudice they encountered were not only reflective of the era's societal norms but also resonated with contemporary issues surrounding gender and racial inequality.

In examining the characters' narratives, it became evident that their resilience, determination, and intellectual prowess were key elements of their resistance against the oppressive forces that sought to limit their opportunities. One of the central themes explored in this writing is the concept of intersectionality, a term coined by Kimberlé Crenshaw. The experiences of Katherine, Dorothy, and Mary exemplify the interconnected nature of their identities as black women, highlighting the need for an intersectional feminist approach to address the unique challenges faced by women who exist at the intersection of multiple marginalized identities. The film underscores the importance of recognizing and dismantling intersecting systems of oppression to achieve true gender equality.

It is essential to reflect on the broader implications of the movie and its relevance to contemporary conversations on gender equality. The narratives of these extraordinary women serve as a testament to the countless untold stories of women who have contributed significantly to various fields but have been overshadowed or excluded from historical accounts. In examining the resistance displayed by the protagonists, Katherine, Dorothy, and Mary navigated a landscape that sought to exclude them, and yet, through their intellect, tenacity, and support for one another, they prevailed. Moreover, they encourage to build alliances and solidarity across different axes of oppression, recognizing that true progress towards gender equality requires addressing the intersecting challenges faced by women of diverse backgrounds. The struggle for gender equality is ongoing, and it necessitates continuous efforts to dismantle systemic barriers, challenge stereotypes, and create environments that empower women to thrive in all areas of life.

In the concluding remarks, it is crucial to acknowledge the significance of storytelling as a tool for social change. The power of narrative, as demonstrated by this film, lies in its ability to humanize and contextualize complex issues, making them accessible to a broad audience. It is essential to amplify diverse voices and narratives that contribute to a more inclusive understanding of history and a collective vision for a just society. Through the lens of gender equality and intersectional feminism, the multifaceted

challenges faced by the characters and, by extension, women in various spheres. The film serves as a catalyst for critical discussions on historical representation, systemic oppression, and the ongoing struggle for gender equality.

REFERENCE

- Crenshaw, K. (1989). Demarginalizing the Intersection of Race and Sex: A Black Feminist Critique of Antidiscrimination Doctrine, Feminist Theory, and Antiracist Politics. *University of Chicago Legal Forum*, 139-167.
- Gillis, S., & Waters, W. (2011). *Feminism, Domesticity and Popular Culture* (1 Edition). Routledge Taylor & Francis Group London and New York. <https://www.routledge.com/Feminism-Domesticity-and-Popular-Culture/Gillis-Hollows/p/book/9780415897877>
- Giorgi, A. (2021). Religious Feminists and the Intersectional Feminist Movements – Insights from a Case Study. *European Journal of Women's Studies*. 28(2): 244-259.
- Griffin, R. A. (2012). *I AM an Angry Black Woman: Black Feminist Autoethnography, Voice, and Resistance*. *Women's Studies in Communication*, 35(2), 138–157. doi:10.1080/07491409.2012.724524
- Heathcote, H., & Otto, O. (2014). Rethinking Peacekeeping, Gender Equality and Collective Security: an Introduction. *Springer Link*, 1-20. https://page-one.springer.com/pdf/preview/10.1057/9781137400215_1
- Johnson, J. E., & Christie, J. F. (2009). Play and Digital Media Computers in the Schools (Issue 4). *Interdisciplinary Journal of Practice, Theory, and Applied Research*, 26, 284-289. <https://doi.org/10.1080/07380560903360202>.
- Lloro-Bidart, T., & Finewood, M. H. (2018). Intersectional feminism for the environmental studies and sciences: looking inward and outward. *Journal of Environmental Studies and Sciences*, 8(2), 142–151. doi:10.1007/s13412-018-0468-7
- Rabiger, M. (2009). *Directing the Documentary*. Focal Press Taylor & Francis Group London and New York. file:///C:/Users/ASUS/Downloads/9781315768335_previewpdf.pdf
- Royle, N. (2011). *Veering?: A Theory of Literature*. Edinburg University Press.

- Royle, N., & Andrew, E. (2015). *Hal Ini Disebut Sastra Membaca, Berpikir, Menulis* (Edisi ke-1). Routledge Taylor & Francis Group London and New York. <https://www.book2look.com/embed/9781317698289>
- Shannon, G., Jansen, M., Williams, K., Cáceres, C., Motta, A., Odhiambo, A., ... Mannell, J. (2019). *Gender equality in science, medicine, and global health: where are we at and why does it matter?* *The Lancet*, 393(10171), 560–569. doi:10.1016/s0140-6736(18)33135-0
- Shetterly, M. L. (2016). Hidden Figures: The American Dream and the Untold Story of the Black Women Mathematicians Who Helped Win the Space Race. William Morrow.
- Thadi, R. (2014). Citra Perempuan dalam Media. *Jurnal Syi'ar*, 14 (1), 27-38. file:///C:/Users/ASUS/Downloads/1423-2998-1-SM.pdf
- Turale, S. (2020). A Brief Introduction to Qualitative Description: A Research Design Worth Using. *Pacific Rim International Journal of Nursing Research*, 24 (3), 289-291. file:///C:/Users/ASUS/Downloads/somchith,+01+Editorial_3%20(1).pdf
- Wood, W., & Eagly, A. H. (2012). Biosocial Construction of Sex Differences and Similarities in Behavior. *Advances in Experimental Social Psychology*, 46 (69), 55-123. <https://www.scholars.northwestern.edu/en/publications/biosocial-construction-of-sex-differences-and-similarities-in-beh>